

**ZOLL**<sup>®</sup>

**HEART  
FAILURE  
MANAGEMENT  
SYSTEM**

**EARLY MANAGEMENT**

So You Can  
Live Your Life

Patient Information





# What is Heart Failure?

Heart failure is a condition in which the heart muscle is unable to pump enough blood to meet the body's needs. Every year, about one million patients are hospitalized for heart failure<sup>1</sup> with nearly 1 in 3 patients needing to return to the hospital within 3 months.<sup>2</sup>

## Early Treatment is Important

The time after a heart failure event can be a vulnerable period. Your doctor will make a plan that is designed to get you back to normal activities and prevent you from returning to the hospital.

Often times, worsening of your heart failure can be occurring without you noticing any signs or symptoms, making it difficult for your health care provider to act early.

## How does ZOLL® Heart Failure Management System\* (HFMS) help?

ZOLL HFMS is an advanced technology that helps your care team understand your condition and how you are responding to different therapies prescribed by your doctor.

With ZOLL HFMS, your care team will receive information about your condition, which can help them to recommend changes to your care plan before you feel any symptoms.

**A recent study has shown that using ZOLL HFMS can reduce your chances of being hospitalized so you can focus on living your life.<sup>3</sup>**

Every year, about  
**1 MILLION**  
patients are hospitalized  
for heart failure.<sup>1</sup>

**YOU ARE  
NOT ALONE**

ZOLL HFMS ensures  
your physician has access  
to your information so  
you receive proactive  
and timely care.

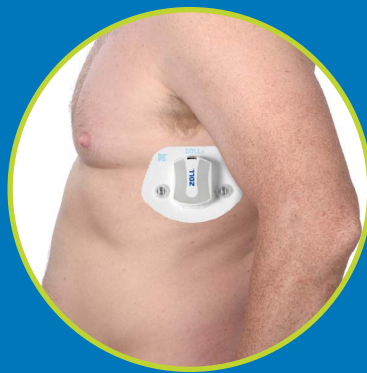


# How Do You Start ZOLL HFMS?

After your doctor prescribes ZOLL HFMS, you will receive a package in the mail containing all parts of the device:



Sensor snaps into patch



Patch adheres to left side



Gateway device on charger

**Contact ZOLL before using your device** for the first time to allow us to assist with setup. If you do not call within two days of receiving your device, a ZOLL representative will call you to help with setup. Please note that our callerID will show the number 1.412.968.3658 from Pennsylvania.

## How do you contact us?

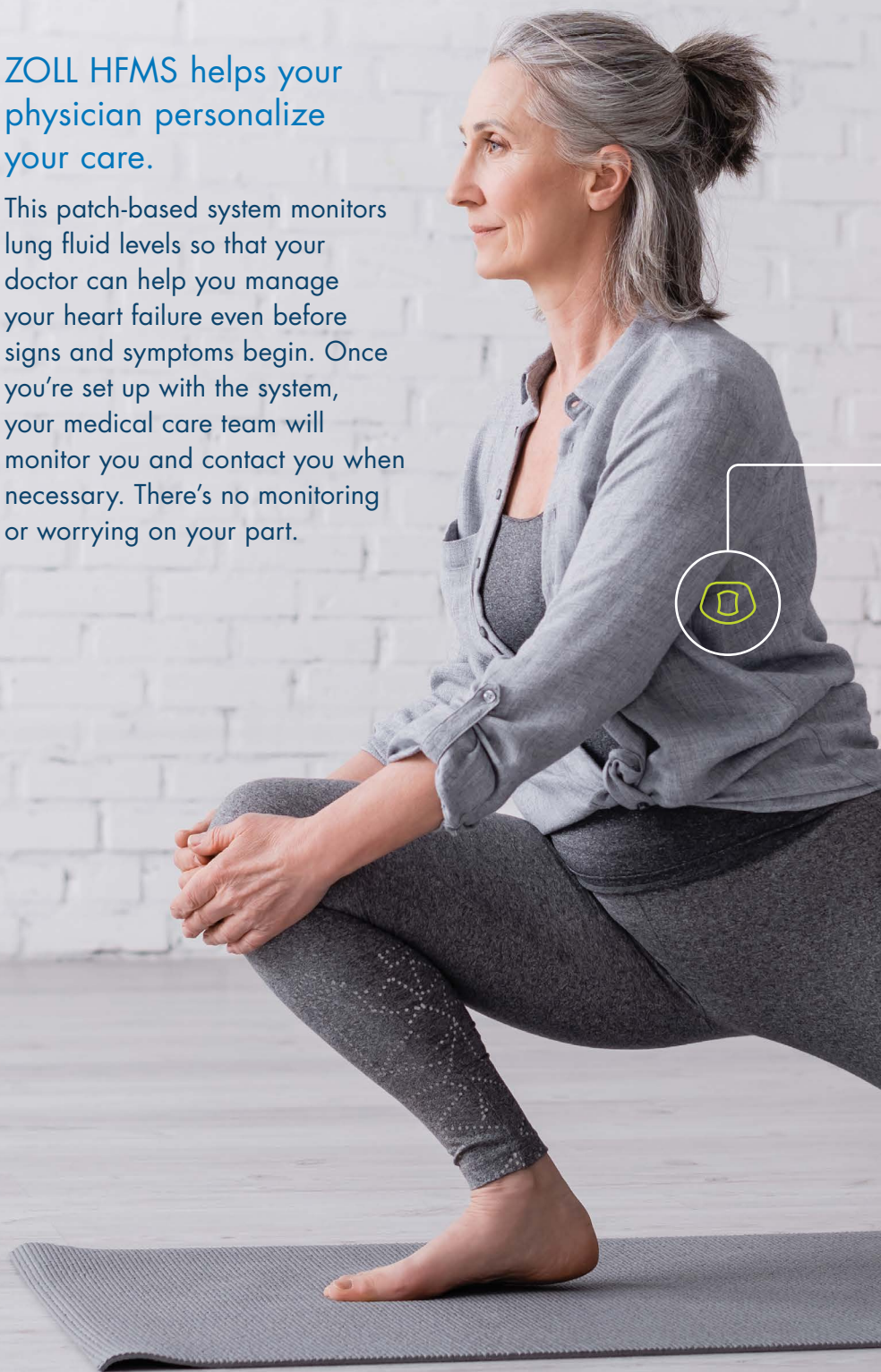
Call us 24 hours a day, 7 days a week at

**1.888.592.3798**

# How Does **ZOLL Heart Failure Management System** Work?

ZOLL HFMS helps your physician personalize your care.

This patch-based system monitors lung fluid levels so that your doctor can help you manage your heart failure even before signs and symptoms begin. Once you're set up with the system, your medical care team will monitor you and contact you when necessary. There's no monitoring or worrying on your part.



1

ZOLL HFMS includes a small sensor, about the size of a Tic Tac box, that snaps into a patch that is placed on your left side.



Gateway device



2

The sensor communicates with a smartphone-sized device that is used to securely send data to ZOLL.

**Note:**

It's important to carry this device with you at all times.



3



Your medical care team will then contact you if any changes to your medical care plan are necessary.

4

Your doctor will typically prescribe **ZOLL HFMS** for a period of **up to 90 days.**



# ZOLL®

The trained staff at ZOLL monitors your data and will deliver timely alerts and reports to your medical care team if anything changes.



**We're here  
to help you.**

Contact us 24 hours a day,  
7 days a week at

**1.888.592.3798**



\*FDA registered name:  $\mu$ Cor™ Heart Failure and Arrhythmia Management System

1. Benjamin EJ, Blaha MJ, Chiuve SE et al. Heart Disease and Stroke Statistics-2019 Update: A Report From the American Heart Association. *Circulation* 2019;139:e56-e528.
2. Khan MS, Sreenivasan J, Lateef N, et al. Trends in 30- and 90-Day Readmission Rates for Heart Failure. *Circ Heart Fail.* 2021;14(4):e008335.
3. Boehmer J, et al. Impact of Heart Failure Management Using Thoracic Fluid Monitoring From a Novel Wearable Sensor: Results of the Benefits of Microcor ( $\mu$ Cor™) in Ambulatory Decompensated Heart Failure (BMAD) Trial. Presented as Late Breaking Clinical Trial at the 2023 American College of Cardiology Annual Scientific Session, March 6, 2023.

© 2023 ZOLL Medical Corporation. All rights reserved. ZOLL is a trademark or registered trademark of ZOLL Medical Corporation and/or its subsidiaries in the United States and/or other countries. All other trademarks are the property of their respective owners.

ZCDM-0021 Rev 1

**ZOLL®**